

INSIDE THIS ISSUE

Carlsen - Vachier-Lagrave	2
Nepomniachtchi - Nakamura	3
Aronian - Anand	4
Caruana - Karjakin	5
Svidler - So	6
Current Standings	7
Round 5 Pairings	7
Schedule of Events	8

CUP★CHRONICLE

SUNDAY, AUGUST 6, 2017 | ISSUE 4

ROUND 4 HIGHLIGHTS

BY WGM TATEV ABRAHAMYAN



ROUND 4 // LENNART OOTES

ROUND 4 RESULTS

♔ GM M. Carlsen	0
♚ GM M. Vachier-Lagrave	1
♔ GM I. Nepomniachtchi	1
♚ GM H. Nakamura	0
♔ GM L. Aronian	1/2
♚ GM V. Anand	1/2
♔ GM F. Caruana	1/2
♚ GM S. Karjakin	1/2
♔ GM P. Svidler	1/2
♚ GM W. So	1/2

CURRENT STANDINGS

1. GM M. Vachier-LaGrave	3
2. GM F. Caruana	2 1/2
3. GM M. Carlsen	2
4. GM L. Aronian	2
5. GM S. Karjakin	2
6. GM W. So	2
7. GM V. Anand	2
8. GM I. Nepomniachtchi	1 1/2
9. GM H. Nakamura	1 1/2
10. GM P. Svidler	1 1/2

The hard-fought game between Magnus Carlsen and Maxime Vachier-Lagrave produced the sole leader of the tournament for the first time. Far from perfect, the game was a rollercoaster ride which started as advantageous for Carlsen, but several mistakes later ended in Vachier-Lagrave's favor. Clearly a heartbreaking loss for the World Champion, who needs to recover quickly and not allow this loss to dictate the direction of the rest of his tournament. On the other hand, the win is a big confidence boost for the Frenchman who not only defeated one of his main rivals with the black pieces, but will also have three whites in the remaining five games. The rest of the games ended in a draw, except for Ian Nepomniachtchi's win over Hikaru Nakamura, which puts Fabiano Caruana in clear second place—only half a point behind the leader.



GRAND CHESS TOUR™
2017

GRANDCHESSTOUR.ORG | @CCCSL
@GRANDCHESSTOUR | #GRANDCHESSTOUR



GM MAGNUS CARLSEN - GM MAXIME VACHIER-LAGRAVE

BY WGM TATEV ABRAHAMYAN, ANNOTATIONS BY GM CRISTIAN CHIRILA

This epic six hour battle was the most thrilling and crucial game of the day. At first, it seemed as though Carlsen is playing to his highest standards and in true Magnus style that the chess world is accustomed to. In a completely locked position, the World Champion outsmarted his opponent and created an advantage out of nothing, but at the key moment, instead of delivering the winning blow, Carlsen blundered. The game still could have been salvaged but usually a mistake like that means that the player has lost the thread of the game. Instead of keeping the game balanced and trying to make a draw, Carlsen kept playing for complications. It took a single mistake from the Norwegian for Vachier-Lagrave to take full control of the position and convert with near perfect play. With this heroic win, the Frenchman is now leading the tournament.

[What a thrilling battle filled with twists, turns, blunders, and, ultimately, incredible conversion skills these two gladiators offered. Let's focus on the key aspects of the game]

1.Nf3 Nf6 2.c4 c5 3.Nc3 d5 4.cxd5 Nxd5 5.e3 Nxc3 6.dxc3 [The first real surprise of the game. Magnus decides to enter a slightly better endgame, but shies away from the main lines]

6...Qxd1+ 7.Kxd1 Bf5 [Stopping white from taking control of the center with e4]

8.Nd2 Nc6 9.e4 Bg6 [The novelty!]

[9...Bd7 10.Kc2 0-0-0 11.Nc4 f5 12.Be3 e5 13.g3 Be7 14.Bh3 g6 15.Bh6² 1/2-1/2 (54) Margvelashvili,G (2548)-Georgescu,T (2396) Kazan 2013]

10.Bb5 [A precise move, not allowing black to finish his development with long castle]

10...Rc8 11.h4 h5 12.Re1 e6 13.a4 [13. Nc4 Would have directly challenged black's piece placement 13...a6 14.Bxc6+ Rxc6 15.Ne5 Rd6+ 16.Kc2 Bh7 17.a4 f6 18.Nc4 Rd8 19.f3²]

13...Be7 14.g3 0-0 15.a5 [15.Nc4 Rfd8+ 16.Kc2 Nb4+! 17.cxb4 cxb4 18.Kb3 Rd3+ 19.Kc2 Rdd8=]

15...Rfd8 16.a6?! b6 17.Kc2 Ne5 18.f4 Ng4 19.Kb3 f6 20.Nc4 [An incredibly complex endgame. White has taken the space on both

sides of the board, black is patiently waiting and hopes he will be able to take advantage of white's overextended structure]

20...Nf2 21.e5 [21.f5 Bf7 (21...exf5? 22.exf5 Be8 23.Rxc7 Bxb5 24.Rxa7±) 22.fxe6 Bxe6 23.e5 f5÷]

21...Ne4 22.Be3 Bf5 [22...Nxg3?? 23.Rg1+÷]

23.Rg1 Rd5 24.Rae1 Kf7 25.Bc1 Bh7?! 26.Re3 [26.g4! would have been the perfect moment to break on the kingside! 26...hxg4 27.Rxg4 Nf2 (27...f5 28.Rg2± Black's pieces are completely restrained) 28.Rg3 Nd3 29.Reg1 Rg8 30.h5² Black is going to face continuous pressure on the g-file. Definitely not something that Maxime was looking forward to. Despite all that, White's structure is slightly shattered at the moment]

26...Rcd8 27.Bc6 Nf2 28.Re2 Nd3 29.exf6 gxf6 30.Bb5 Rg8 31.Bd2 Rgd8 32.Be3 Be4 33.Rd2= [The position is objectively equal, nevertheless Magnus manages to outfox his opponent right before the time control!]

33...Rg8 34.Ka4 Rgd8 35.Kb3 Rg8 36.Ka2 f5 37.Rh2 Rc8 38.Rd2 Rg8 39.Re2! [Not changing anything in the position, but allowing black some extra options in order to confuse him!]

39...Bf3 [39...Bxh4 40.Rh2 Bxg3 41.Rxh5 Rg7 42.Rh8 Bxf4 43.Ra8 Rd7!! (43...Rxg1 44.Rxa7+ Kf6 45.Bxg1 The position is wild. Black has an extra pawn but white's a pawn is extremely dangerous and could prove decisive at any moment!)]

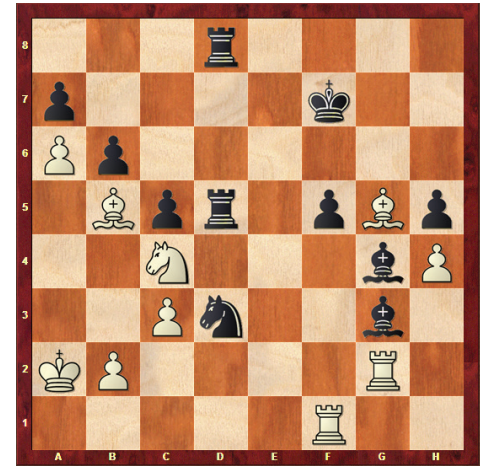
40.Rh2 Bf6 41.Nd2 Bg4?! [The Bis now completely out of play]

42.Rf1 Rgd8 43.Nc4 e5 44.fxe5 Bxe5 45.Bg5 Bxg3 [So far the World Champion has played the perfect endgame. But now the inexplicable happens!]

46.Rg2?? [Losing all the advantage]

[46.Rd2! would have converted easily 46...Rf8 47.Ka3 f4 48.Rxd3 Rxd3 49.Ne5+÷÷ White is a piece up!]

46...Bh3 47.Rxg3 [47.Rxf5+ A scintillating variation that maintains positional balance 47...Bxf5 48.Bxd8 Rxd8 49.Rxg3 Kf6=]



Position after 46.Rg2??

47...Bxf1 48.Rf3? [After this final blunder, Black is almost winning]

[48.Bxd8! Rxd8 49.Rf3 Be2 50.Rxf5+ Kg6 51.Rg5+ Kf6=]

48...Be2! 49.Bxd8 [49.Re3 Magnus believed this is still better for him, but missed 49...f4 50.Rxe2 Nc1+!÷÷ the blind spot in Magnus' calculation]

49...Bxf3 50.Bxb6 axb6 51.Bc6 Be4! [The only move that wins, MVL find it!]

52.a7 Rd8 53.Nd6+ Rxd6 54.Bxe4 Rd8 55.a8Q Rxa8+ 56.Bxa8 Ne5 [This is just a technical win]

57.Kb3 f4 58.Kc2 Kg7 [58...Kf6 More precise 59.Kd2 (59.Be4 Ng6÷÷) 59...Kf5]

59.Kd2 Ng6 60.Kd3 Nxe4 61.Ke4 f3? [A move that could have blundered the winning advantage, luckily for MVL he is still within winning range]

[61...Ng6 Would have been much easier 62.Kf5 (62.Kf3 Kf6 63.Bb7 Kg5) 62...f3]

62.Ke3 Kf6 63.b4 c4!! [By a thread, the only winning move in the position]

[63...cxb4 64.cxb4 Ke5 65.Kf2 Kf4 66.b5 no way to make progress without sacrificing a pawn, which would lead to massive simplifications]

64.Bd5 Kf5 65.Bxc4 Kg4 66.Kf2 Ng6 67.Be6+ Kf4 68.Bf7 Ne5 69.Bxh5 Nd3+ 70.Kf1 Kg3 71.Bf7 Nf2 [What a wild affair, and we have a new leader after a tumultuous round, MVL!]

1-0

GM IAN NEPOMNIACHTCHI - GM HIKARU NAKAMURA

BY WGM TATEV ABRAHAMYAN



GM IAN NEPOMNIACHTCHI
// LENNART OOTES

After losing the first two games, the Russian Grandmaster recovered nicely as his opponent completely collapsed. In an attempt to make his opponent uncomfortable, Nepomniachtchi opted for a quieter opening knowing that Nakamura, true to his style, will try to seek active counter play. White had a slight edge when not sensing the danger, Black played carelessly, then instead of accepting a worse position, blundered the exchange. The material advantage was enough for an easy conversion when Nakamura blundered yet again and was forced to resign.

1.d4 Nf6 2.c4 e6 3.Nf3 d5 4.Nc3 Be7 5.Bf4 0-0 6.e3 c5 [Nakamura has played this move many times before.]

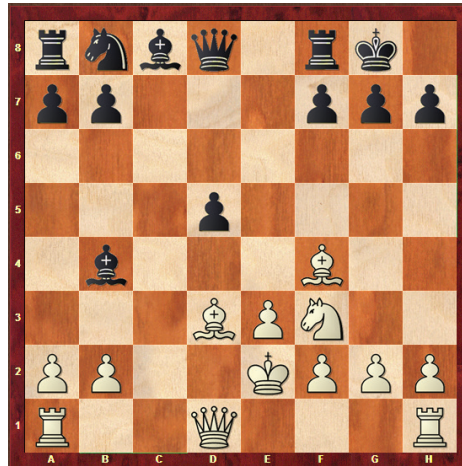
[They played the following game in 2015 6...b6 7.Qc2 Bb7 8.cxd5 Nxd5 9.Nxd5 Qxd5 10.Bd3 h6 11.e4 Qa5+ 12.Bd2 Bb4 13.Rc1 c5 14.dxc5 Nd7 15.c6 Rac8 16.Bxb4 Qxb4+ 17.Qd2 Qxd2+ 18.Kxd2 Bxc6 19.Nd4 Bb7 20.f3 Rfd8 21.Ke3 Nc5 22.Be2 Na4 23.Rxc8 Rxc8 24.Rb1 a6 25.Bd1 Nc5 26.Rc1 Kf8 27.f4 Rd8 28.Bf3 a5 29.Rc3 Ke7 30.a3 g5 31.g3 gxf4+ 32.gxf4 Rg8 33.b4 axb4 34.axb4 Na6 35.Be2 Rc8 36.Rxc8 Bxc8 37.Nc6+ Kd6 38.Ne5 f5 39.Nc4+ Kc7 40.b5 Nc5 41.e5 Ne4 42.Bf3 Nc3 43.Nd6 Bd7 44.Be2 Nxe2 45.Kxe2 Kd8 46.Kf2 Be8 47.Kg3 Bh5 48.Kh4 Be2 49.Kg3 Bh5 50.Kf2

Kc7 51.Ke3 Kd8 52.Nc4 Kc7 53.Kd4 Be8 54.Nd6 Bh5 55.Ke3 Kd8 1/2-1/2 (55) Nepomniachtchi,I (2705)-Nakamura,H (2814) Baku 2015]

7.dxc5 Bxc5 8.cxd5 [committal, as White fixes the pawn structure in the center and gives Black an isolated pawn]

[8.Qc2 Nc6 9.a3 Qa5 10.0-0 Be7 11.g4 is one of the many options that leads to a sharper position with the kings castled on opposite sides]

8...Nxd5 9.Nxd5 exd5 10.Bd3 Bb4+ [10...Bb6]



11.Nd2 [11.Ke2 is actually a possibility and has been tried by none other than Yasser Seirawan! 11...Nc6 12.Qc2 h6 13.Rhd1 and White castles "by hand" after moving the king to f1]

11...Nc6 12.0-0 Be6 13.Nf3 [it looks like White wasted time with Nf3-d2-f3, but the bishop on b4 is misplaced]

13...Be7 14.Rc1 Bf6 15.a3 Qe7 [15...Bxb2 doesn't quite work out tactically 16.Bxh7+ Kxh7 (16...Kh8 17.Ng5 Bxc1 18.Qh5+-) 17.Qc2+ Kg8 18.Qxb2]

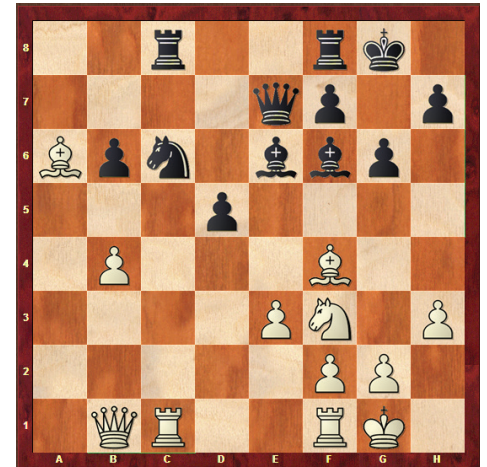
16.b4 a6 17.h3 Rac8 18.Rc5 [Nepomniachtchi described this move as provocative. White has a slight edge and Nakamura is the kind of player who seeks active counter play, which is why Nepomniachtchi tried to provoke him]

18...a5 19.Qb1 axb4 20.axb4 [20.Bxh7+ Kh8 21.axb4 g6 22.Bxg6 fxe6 23.Qxg6 is still playable but unnecessary]

20...b6? [weakening the position]

[20...g6 was necessary 21.Rfc1 and White's position is pleasant]

21.Rcc1 g6?? [21...Nxb4 still holds the position together 22.Bxh7+ Kh8 23.Bf5± and Black has two weaknesses on b7 and d5, while White has none.]



22.Ba6! [taking advantage of 20...b6. Now the rook has nowhere to go to defend the knight]

22...Nxb4 [22...Ra8 23.Rxc6 Rxa6 24.Bd6 Qd7 25.Bxf8 and now 25...Qxc6 is impossible because of 26.b5]

23.Bxc8 Rxc8 24.Rxc8+ Bxc8 [the position is open so the rook will overwhelm the minor piece]

25.Rc1 Bf5 26.Qb3 Nd3 27.Rc7 Qd8 28.Bg3 h5 29.Qxb6 h4 30.Bd6 Be4 [the final blunder, but it is hard to suggest anything better for Black]

31.Qc6 Kg7 32.Rc8 d4 33.Qxe4

1-0

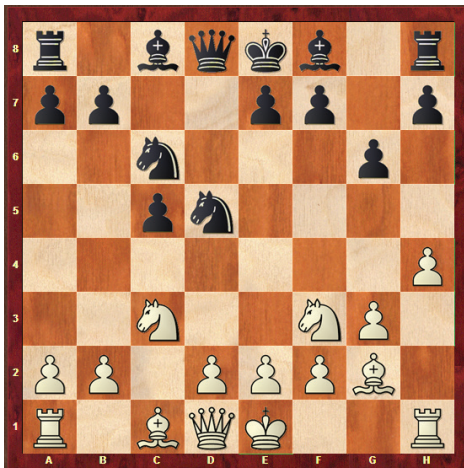
GM LEVON ARONIAN - GM VISWANATHAN ANAND

BY WGM TATEV ABRAHAMYAN, ANNOTATIONS BY GM CRISTIAN CHIRILA



GM LEVON ARONIAN - GM VISWANATHAN ANAND // AUSTIN FULLER

The Armenian superstar, known for his creative play, did not disappoint with his opening choice. He chose an obscure line that hasn't been explored, pushing his pawn all the way to h6. The former World Champion kept his cool and not only did he defend against his opponent's advances but found himself in a pleasant position. He found a key idea on move 21, which forced his opponent to play with precision. Aronian reacted correctly and Anand decided to go for the repetition after not seeing a clear plan to increase his advantage.



1.c4 c5 2.Nf3 Nc6 3.Nc3 Nf6 4.g3 d5 5.cxd5 Nxd5 6.Bg2 g6 7.h4 [quite committal and not the most common continuation. Anand has played this line before]

[7.Ng5 e6 8.Nge4 f5 9.Nxd5 exd5 10.Nc3 d4 11.Nd5 Bd6 12.d3 Be6 13.h4 Be5 14.Nf4 Bf7 15.Bd2 Rc8 16.Rc1 b6 17.0-0 Bxf4 18.Bxf4 Bd5 19.e4 dxe3 20.fxe3 0-0 21.Bg5 Qd6 22.e4 Bxa2 23.exf5 gxf5 24.b3 Nd4 25.Bf4 Qe6 26.Re1 Qf7 27.b4 Bd5 28.bxc5 Bxg2 29.Kxg2 Rxc5 30.Rxc5 bxc5 31.Qa4 Rc8 32.Kh3 Ne6 33.Re5 c4 34.Qa6 Nxf4+ 35.gxf4 Rc7 36.Re2 c3 37.Qd6 Qd7 38.Rg2+ Kf7 39.Qe5 Qc6 40.Qg7+ Ke8 41.Re2+ 1-0 (41) Nepomniachtchi,I (2751) -Anand,V (2786) Zürich 2017]

7...Bg7 8.h5 Bf5 9.Ng5 e6 10.h6 [Novelty. The pawn looks strong here but can be a problem in the endgame as it can become a weakness]

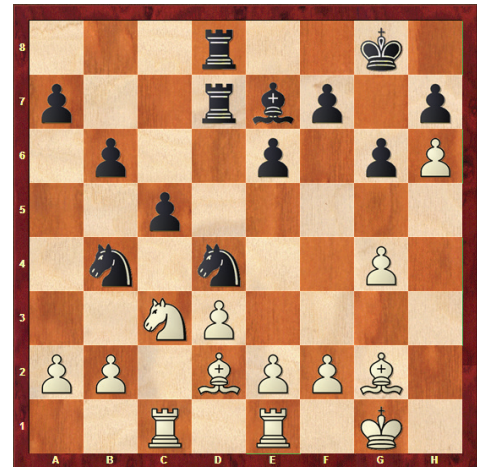
[this position has occurred only once before 10.Nge4 c4 11.Qa4 Nb6 12.Qd1 Nd5 13.Qa4 Nb6 14.Qd1 1/2-1/2 (14) Van Wely,L (2685) -Heimann,A (2586) Novi Sad 2016]

10...Bf6 11.Nge4 Be7 12.d3 Bxe4 13.Bxe4 [Aronian went into the confession booth and joked that yesterday he learned from Vachier-Lagrave that bishops are better than knights and wanted to test it out the theory]

13...0-0 14.Bd2 Qd7 15.Rc1 Rfd8 16.Bg2 b6 17.Qa4 [17.g4 Rac8 18.g5 defending the h6 pawn 18...Nxc3 19.bxc3 c4 20.d4 b5 and after b4, the position will be shaky for White]

17...Rab8 18.0-0 Nd4 [18...b5 19.Qg4 Nf6 20.Qh3 In his own word's, Aronian's idea was to "park" the queen on h3, defending the h6 pawn]

19.Qxd7 Rxd7 20.Rfe1 Rbd8 21.g4 [stopping Nf5. As we now see, the h6 pawn has become a headache for White]



21...Nb4! [moving the knight out of the way and threatening c4]

22.a3 [22.e3 Nxd3 23.exd4 Nxe1 24.Rxe1 Rxd4 and Black will collect another pawn 25.Be3 Rxg4 with a big material advantage; if White plays a passing move like 22.Kf1 c4 and there is trouble on the d file 23.dxc4 Ndc2 winning an exchange]

22...Nd5 23.Nxd5 exd5 24.Rc3 Nb5 [Black has a slight advantage due to his center and active pieces but Anand did not see how to press for a win and decided to end the game]

[24...Ne6 would have kept the game going 25.Kf1 Bf6 and Black can start pushing his queenside pawns]

25.Rc2 Nd4 26.Rc3 Nb5 27.Rc2 Nd4

1/2-1/2

GM FABIANO CARUANA - GM SERGEY KARJAKIN

BY WGM TATEV ABRAHAMYAN



GM FABIANO CARUANA - GM SERGEY KARJAKIN // LENNART OOTES

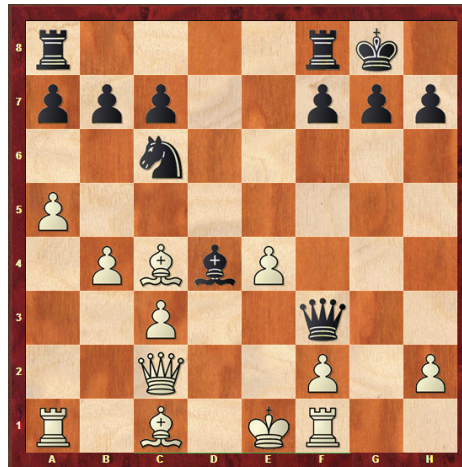
The opening was yet another Giuoco Piano, which has become the latest fashion at the top levels. Caruana played a rare move order, leaving his king in the center and trying to gain advantage on the queen side. Karjakin sacrificed a central pawn trying to build quick counterplay and take advantage of his active pieces. Caruana did not take any chances and the game did not last long, but it was still a difficult game, as White needed to do a lot of precise calculation not to find himself in trouble.

1.e4 e5 2.Nf3 Nc6 3.Bb5 Nf6 4.d3 Bc5 5.c3 d5 6.exd5 Qxd5 7.Bc4 Qd6 8.Nbd2 0-0 9.b4 [Caruana had the same position against Jeffery Xiong in the US Championship but without the moves Nbd2 and 0-0]

9...Bb6 10.a4 [threatening to trap the bishop with a5]

10...e4 [very concrete move]

[10...a5 11.b5 Ne7 is possible but Karjakin didn't like having to face Ba3 later on]



11.dxe4 [11...Nxe4 is very sharp 11...Nxe4 12.dxe4 Qf6 13.Qc2 Bg4 14.a5 Bxf3 15.gxf3 Qxf3 16.Rf1 Bd4 17.cxd4 Nxb4 18.Qd2 Qxe4+ 19.Kd1 the computer says White is much better but the position is a complete mess with the king stuck in the center]

11...Ne5 12.Qe2 a5 [12...Nfg4 the idea of sacrificing on f2 doesn't work for two reasons 13.0-0 Nxf2 14.a5 (14.Rxf2 Ng4 15.e5 followed by Ne4 is also good for White) 14...Nh3+ 15.Kh1 Nf2+ 16.Rxf2 Bxf2 17.Nxe5 Qxe5 18.Qxf2 with a big advantage for White]

13.0-0 Bg4 14.bxa5 Rxa5 [14...Bc5 stopping Ba3 15.Rd1 Rfd8³]



15.Ba3 Bc5 16.Bb4 [16.Nb3? Nh5!! 17.Bc1 (17.Nxa5 Bxf3 18.gxf3 Nf4 and mate is coming 19.Qc2 Qg6+ 20.Kh1 Qg2#) 17...Nxc4 18.Qxc4 Be6 winning a piece]

16...Bxb4 17.cxb4 Qxb4 18.Rfb1 Qd6 19.h3 [19.Rxb7 Nh5 and Black can start building up his attack again. The rook on a5 can swing to kingside if necessary]

19...Bxf3 20.Nxf3 b6 21.Bb5 Raa8 [the rook has done its job. It's time to return home and go on an open file]

22.Re1 Rad8 23.Rac1 c5 24.Rc3 g6 25.Rb3 Nxf3+ 26.Qxf3 Qe5 27.Bc4 Rd6 28.Rb5 Rd4 [Black forces the matters]

29.Rxb6 Rxc4 30.Qxf6 Qxf6 31.Rxf6 Rxa4

1/2-1/2

GM PETER SVIDLER - GM WESLEY SO

BY GM CRISTIAN CHIRILA, ANNOTATIONS BY GM CRISTIAN CHIRILA



GM PETER SVIDLER // LENNART OOTES

For the first time in this tournament, the open Italian opening made its debut. As mentioned before, most top level players choose the closed Italian, trying to out-maneuver or out-play their opponents in the later part of the middlegame. Svidler chose this opening because he knew So would be well-prepared and decided to test the waters. They followed a game which was played earlier this year, until So chose a different continuation which oversimplified the game and equalized easily. Svidler took advantage of the only chance to pose problems for his opponent, but correct defense was not a challenge for a player of So's caliber. The game ended in a threefold repetition.

[An important matchup of the day was the one between Svidler and So. The Russian has been slowly finding his stride after a difficult start, and was now ready to try for more. So is playing very solid chess so far but hasn't managed to showcase his brilliant chess that has given him so many tournament victories in the past year. Let's see how they fared in this game!]

1.e4 e5 2.Nf3 Nc6 3.Bc4 [The Giuoco Piano once again makes an appearance]

3...Bc5 4.c3 Nf6 5.d4 [5.d3 This is the move we have seen in almost every game]

5...exd4 6.e5 [6.cxd4 Bb4+ 7.Bd2 (7.Nc3 Nxe4 8.0-0 Bxc3 9.d5 Bf6³ the sacrifices generally favor black, and the recent theory is quite well known, especially at top level) 7...Bxd2+ 8.Nbx d2 d5 9.exd5 Nxd5÷]

6...d5 7.Bb5 Ne4 8.cxd4 Bb6 [8...Bb4+ is another possibility but generally white will be happy to see the dark square bishop off the board in the upcoming moves 9.Bd2 Nxd2 10.Nbx d2 0-0 11.0-0 Ne7 12.a3 Ba5 13.b4 Bb6 14.Nb3²]

9.Nc3 0-0 10.Be3 Bg4 11.h3 Bh5 [11...Bxf3?! 12.gxf3 Nxc3 13.bxc3 Ne7 14.f4² and white's kingside attack is looking irresistible]

12.Qc2 Bg6 13.Qb3 Ne7 14.0-0 c6 15.Bd3 Nf5 [15...Nd2 would have been an interesting deviation from the game to grab white's bishop pair. Despite that, white does gain initiative and speed in the process 16.Nxd2 Bxd3 17.Rfe1 Bf5 18.Na4÷]



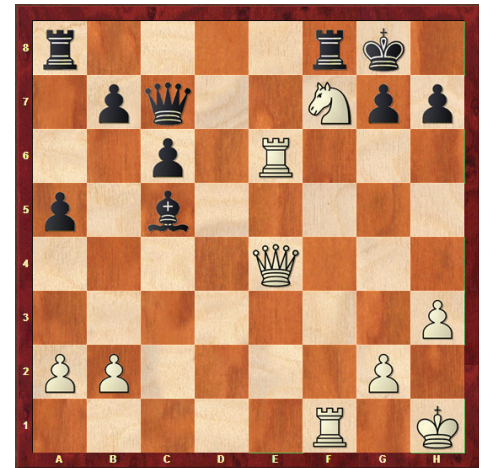
16.Rae1 Nxd4 [now the game simplifies completely]

[16...Nxe3 Could have led to some very interesting material unbalances 17.fxe3 (17.Rxe3 would be the most natural way to recapture, but taking back with the pawn is much more dynamic) 17...Ng3 18.Bxg6 Nxf1 19.Bxf7+ Rxf7 20.Rxf1^o]

17.Bxd4 [17.Nxd4?? Nc5-+]

17...Bxd4 18.Nxe4 dxe4 19.Bxe4 Bxe4 20.Rxe4 Bb6= [the dark square bishop is extremely strong with an open center and a clear target on f2]

21.e6 Qe7! 22.exf7+ Qxf7 23.Re6 Kh8 24.Ne5 [24.Rfe1 Rad8 25.R1e2 Qf5÷]



24...Bxf2+ 25.Kh1 Qg8 [25...Qc7 would have led to some very interesting complications 26.Qb4 a5 27.Qe4 Bc5 28.Nf7+ Kg8 29.Rh6! Rxf7 30.Qxh7+ Kf8 31.Qh8+ Ke7 32.Re1+ Kd7 33.Qxa8 Rf8 34.Rd1+ Ke7 35.Re1+ Kd7 36.Rd1+=]

26.Nd7 [white has to find the repetition, otherwise he is just a pawn down!]

26...Rf7 27.Ne5 Rff8 28.Nd7 Rf7 29.Ne5 [A short but very complex battle between two players that are still looking to make an impact in the tournament.]

1/2-1/2



SINQUEFIELD CUP

CROSS TABLE - ROUND 4

#GrandChessTour



POS.	PLAYER	1	2	3	4	5	6	7	8	9	10	SCORE
1	GM M. VACHIER-LAGRAVE 2789 (URS)			1	1				.5	.5		3
2	GM FABIANO CARUANA 2774 (URS)			.5		1		.5			.5	2.5
T-3	GM MAGNUS CARLSEN 2850 (URS)	0	.5				.5	1				2
T-3	GM WESLEY SO 2781 (URS)	0							.5	.5	1	2
T-3	GM LEVON ARONIAN 2787 (URS)		0				.5	.5			1	2
T-3	GM VISWANATHAN ANAND 2771 (URS)			.5		.5			.5	.5		2
T-3	GM SERGEY KARJAKIN 2770 (URS)		.5	0		.5				1		2
T-8	GM HIKARU NAKAMURA 2798 (URS)	.5			.5		.5				0	1.5
T-8	GM PETER SVIDLER 2744 (URS)	.5			.5		.5	0				1.5
T-8	GM I. NEPOMNIACHTCHI 2744 (URS)		.5		0	0			1			1.5



SINQUEFIELD CUP

PLAYER MATCHUPS

#GrandChessTour

ROUND 4



WHITE	PLAYER	VS	PLAYER	BLACK
	GM SERGEY KARJAKIN 2770 (URS)	—	GM I. NEPOMNIACHTCHI 2767 (URS)	
	GM VISWANATHAN ANAND 2771 (URS)	—	GM FABIANO CARUANA 2774 (URS)	
	GM M. VACHIER-LAGRAVE 2789 (URS)	—	GM LEVON ARONIAN 2787 (URS)	
	(GM) WESLEY SO 2781 (URS)	—	GM MAGNUS CARLSEN 2850 (URS)	
	GM HIKARU NAKAMURA 2798 (URS)	—	GM PETER SVIDLER 2744 (URS)	

SPONSORED BY:

explore **st.louis**

DAILY CHESS PUZZLE

BY DANNY MACHUCA

Submit your solution to our front desk staff for a chance to win a gift card to the store at the Chess Club and Scholastic Center of Saint Louis!

Each day, two \$25 gift cards will be drawn among those who submit a correct solution.

Objective: White to move

White: Carlsen, Magnus
Black: Kamsky, Gata

2013 Sinquefield Cup



SCHEDULE OF EVENTS

TUESDAY, AUGUST 1

4-5:30 PM Autograph Session, Kingside Diner

<p>TUESDAY, AUGUST 1 6 PM Opening Ceremony & <i>PINNED! A Designer Chess Challenge</i> Unveiling, Windows on Washington</p> <p>WEDNESDAY, AUGUST 2 1 PM Round 1</p> <p>THURSDAY, AUGUST 3 1 PM Round 2</p> <p>FRIDAY, AUGUST 4 1 PM Round 3</p> <p>SATURDAY, AUGUST 5 1 PM Round 4</p> <p>SUNDAY, AUGUST 6 1 PM Round 5</p>	<p>MONDAY, AUGUST 7 Rest Day</p> <p>TUESDAY, AUGUST 8 1 PM Round 6</p> <p>WEDNESDAY, AUGUST 9 1 PM Round 7</p> <p>THURSDAY, AUGUST 10 1 PM Round 8</p> <p>FRIDAY, AUGUST 11 1 PM Round 9</p> <p>SATURDAY, AUGUST 12 1 PM Playoff <i>(If Necessary)</i></p> <p>SATURDAY, AUGUST 12 6 PM Closing Ceremony*</p>
---	---

*Private Event, World Chess Hall of Fame

SIDE EVENT HIGHLIGHT

Sinquefield Action Quads

FRIDAY, AUGUST 11

3 Rounds | Game in 20; 3 second delay

Entry Fee

\$10

Registration

6-6:45 PM

Space is limited to the first 40 registrants.

Round 1

7:00 PM

Winner of each Quad receives \$36.
Quick Ratings will be used for Pairings and Prize purposes.

Free Entry for GMs and IMs. USCF membership required.
Arbiter has the discretion to appoint ratings.